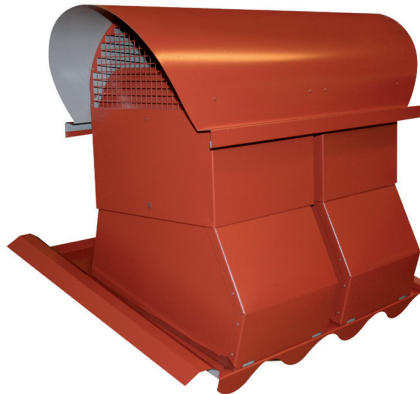




# ABC-VHS KOMBI

COMBINED INTAKE/EXHAUST AIR

**Tip!**  
Before the system is in operation, the roof cowl should be covered to avoid condensation problem.



### USE

ABC-VHS Kombi is a roof cowl used for housing and comfort ventilation.

### DESIGN

Normally manufactured in ABC Garantiplåt with 25 year warranty on the paint coating. The air intake opening is placed under the roof cowl and is protected by a small-animal protected wire mesh. The bottom part is mounted at the same angle as the roof. The top is mounted vertical and is adjustable in positions between 11-40 °. Default is for 2-barrel concrete roof tiles. Connection is made by two spiral ducts with sleeve connection. The pipes are insulated in fire technical class EI15. The roof cowl is delivered complete with lower fittings.

### MAINTENANCE

Inspection of the product should be done at least once a year.

Also manufactured for:

- Clay roof tile
- Profile metal roof
- Alternative top for roof slope 41-50 °

### EXAMPLE, DESCRIPTIVE TEXT

VVS AMA  
QMB.2/QMF.2

Combination roof cowl ABC-VHS KOMBI by ABC Ventilationsprodukter AB fabrikat. Size 160. Manufactured in ABC Garantiplåt corrosivity class C4 with 25 year warranty on the paint coating.

### ALTERNATIVE

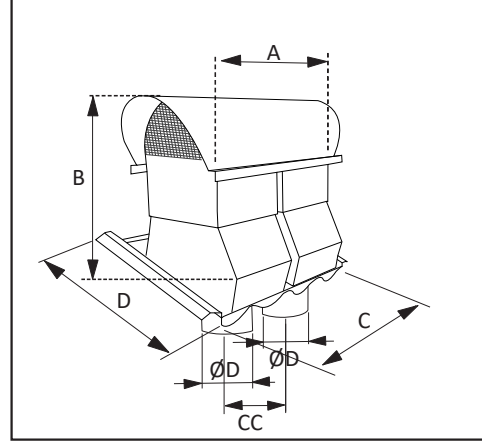


Extension plates for profile metal roof:  
VHFP 840 X 1200 (Width x Length)

Distance correction of sound level dB (A)	
Distance m	Correction dB(A)
5	-22
10	-28
15	-32
20	-34
30	-38
40	-40
50	-42
60	-44

MEASUREMENTS/SIZE

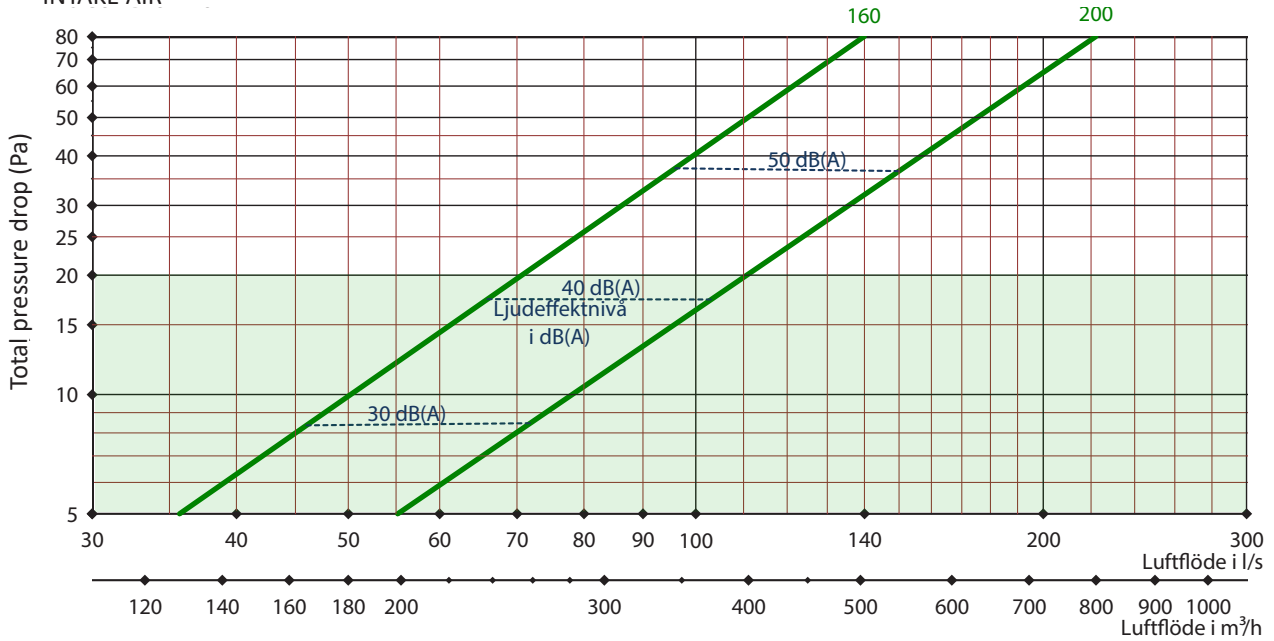
Size ABC-VHS KOMBI Ø D Sleeve connection	A mm	B mm	C+D	CC mm	Weight
160	450	600	Replaces 2 concrete roof tiles.	265	15
200	705	600	Replaces 8 concrete roof tiles.	376	25



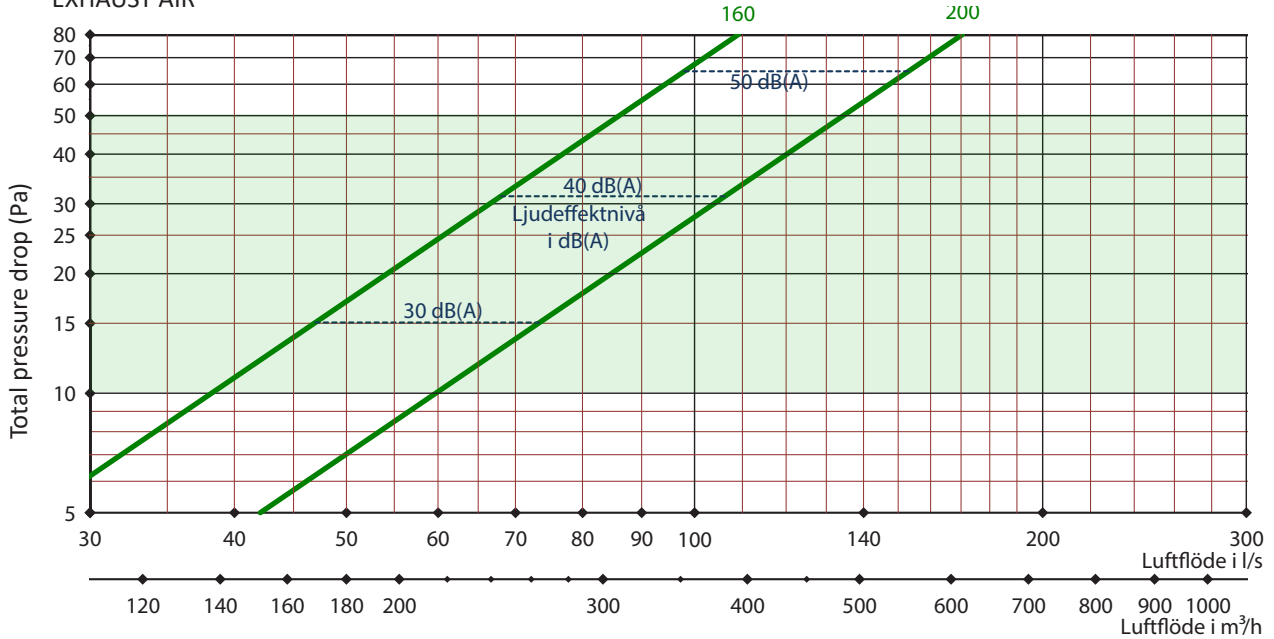
DIMENSIONS

Specified data are guide values

INTAKE AIR



EXHAUST AIR



The green marked area are a good energy choice




Sound and pressure measurements performed by RISE

ABC Ventilationsprodukter AB Tel: 033-29 08 80 www.abcvent.se

We retain the right to make changes without prior warning. Reproduction or copying of this data sheet is prohibited.



# Installation instructions:



VHS Combi (2 connections)

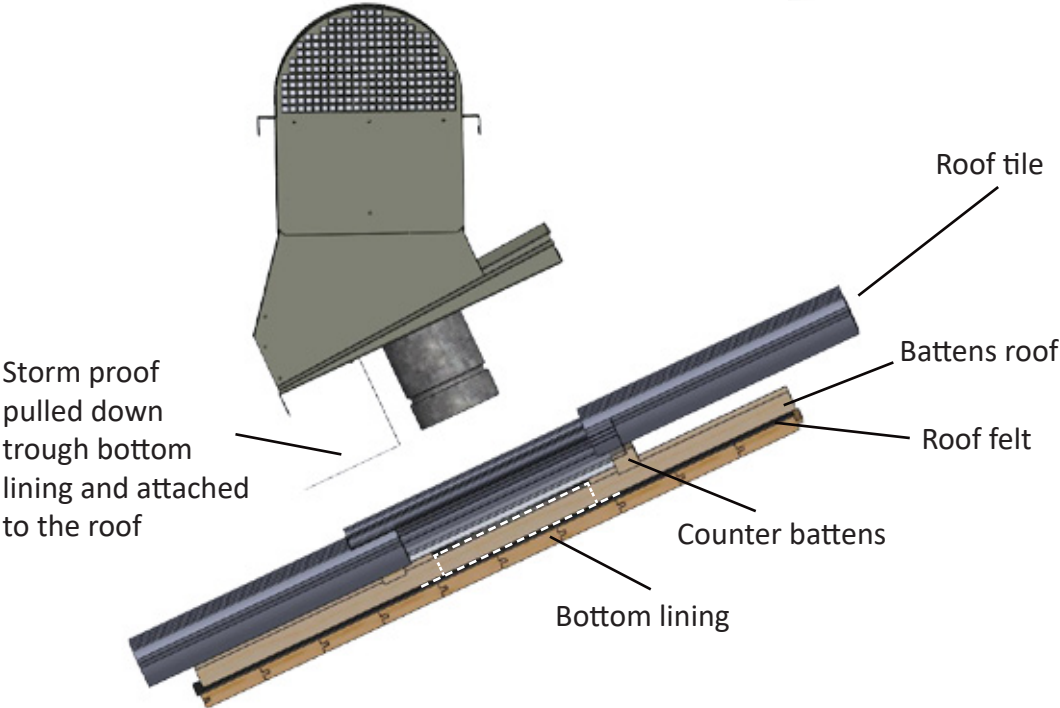
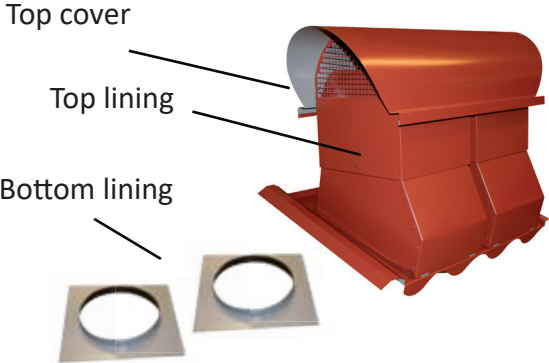
VHS Combi Ø160 replaces 2 roof tiles

VHS Combi Ø200-200 replaces 8 roof tiles

Refers to standard concrete roof tiles.

## Components:

- 2 st Staps 4.8x19 - Top cover
- 2 st Staps 4.8x35 - Top lining
- 8 st Staps 4.8x19 - Bottom lining
- 1+1 Staps 4.8x35 + 4.8x19 - Storm proof

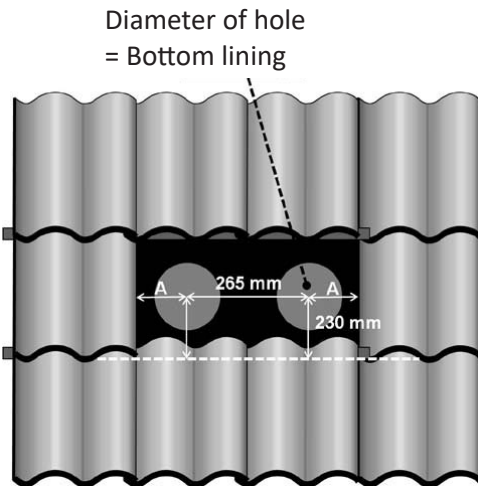


# Installation ABC-VHS-Combi

1. Mark where the roof cowl will be placed. The affected number of roof tiles are removed. Make sure you don't place it above a truss or other unsuitable place.

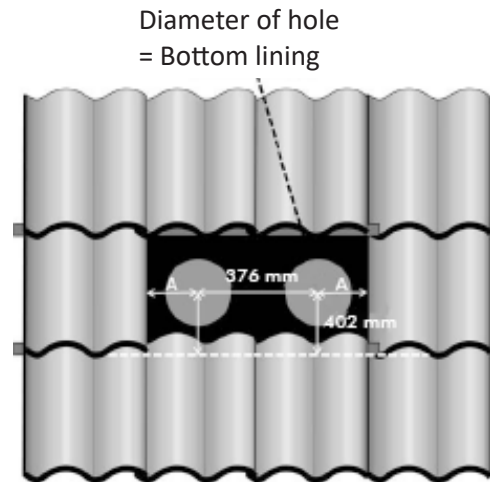
## Storlek 160:

In height, the center of the hole must be 230 mm from the leading edge of the roof tiles. Sideways, the hole should be placed in the middle, measure A to be equal. CC should be 265 mm between the holes.

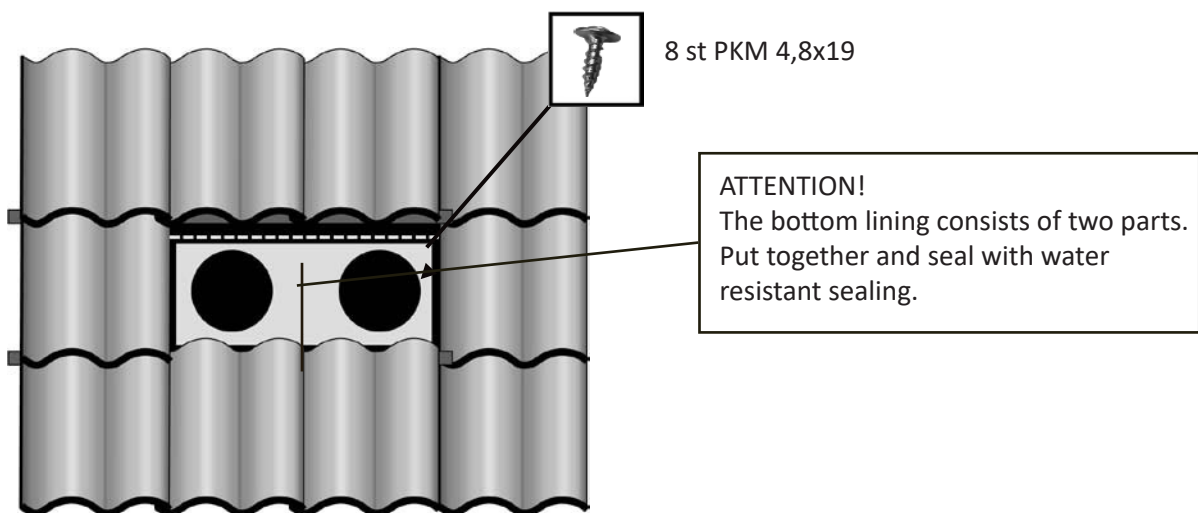


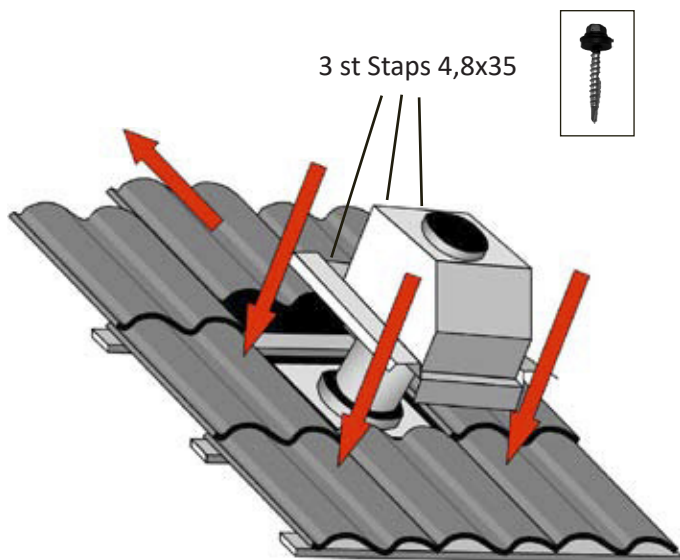
## Storlek 200:

In height, the center of the hole must be 402 mm from the leading edge of the roof tiles. Sideways, the hole should be placed in the middle, measure A to be equal. CC should be 376 mm between the holes.

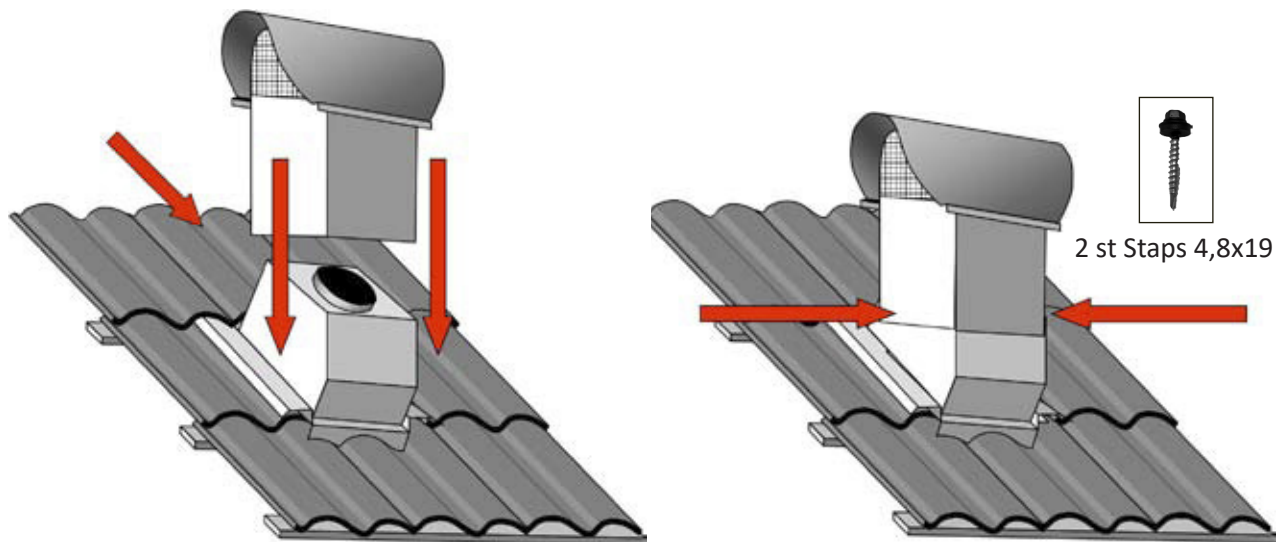


2. Make a cut in the roof felt and insert 20 mm of the bottom lining under the felt. Use the supplied screws. Seal joints and screws with water resistant sealing.





3. The above lying roof tiles is pushed up against the ridge to facilitate the assembly of the top lining. Assemble the top lining at the same angle as This is done by placing the isolated duct through the bottom lining. Then screw the top lining in the existing battens.



4. Install the top vertical, screw it to the top lining with the supplied screws. After the assembly the overlying tiles are pushed back to its original position.

## Environmental product declaration:

For exact content of the product, see the current Building product declaration on [www.abcvent.se](http://www.abcvent.se)