



# ABC-UHZ

STANDARD INTAKE AIR HOOD



### USE

Standard intake air roof hood with protected air intake, for comfort ventilation.

### DESIGN

Normally manufactured in ABC Garantiplåt with 25 year warranty on the paint coating. The intake opening is covered with an insect-proof wire mesh. Lifting points are standard from size 800.

### MAINTENANCE

Inspection of the product should be done at least once a year.

### EXEMPEL DESCRIPTIVE TEXT

VVS AMA  
QMB.2

Intake air hood ABC-UHZ by ABC Ventilationsprodukter AB. Size 800. Manufactured in ABC Garantiplåt corrosivity class C4 with 25 year warranty on the paint coating.

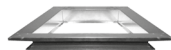
### ALTERNATIVE



Roof duct ABC-TG in EI 30 or EI 60 design. Standard length is 800 mm.



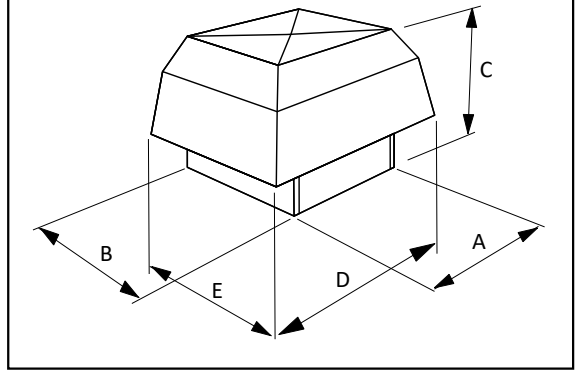
Connection  
ABC-ÖG



Connection  
ABC-BANS

## SIZE

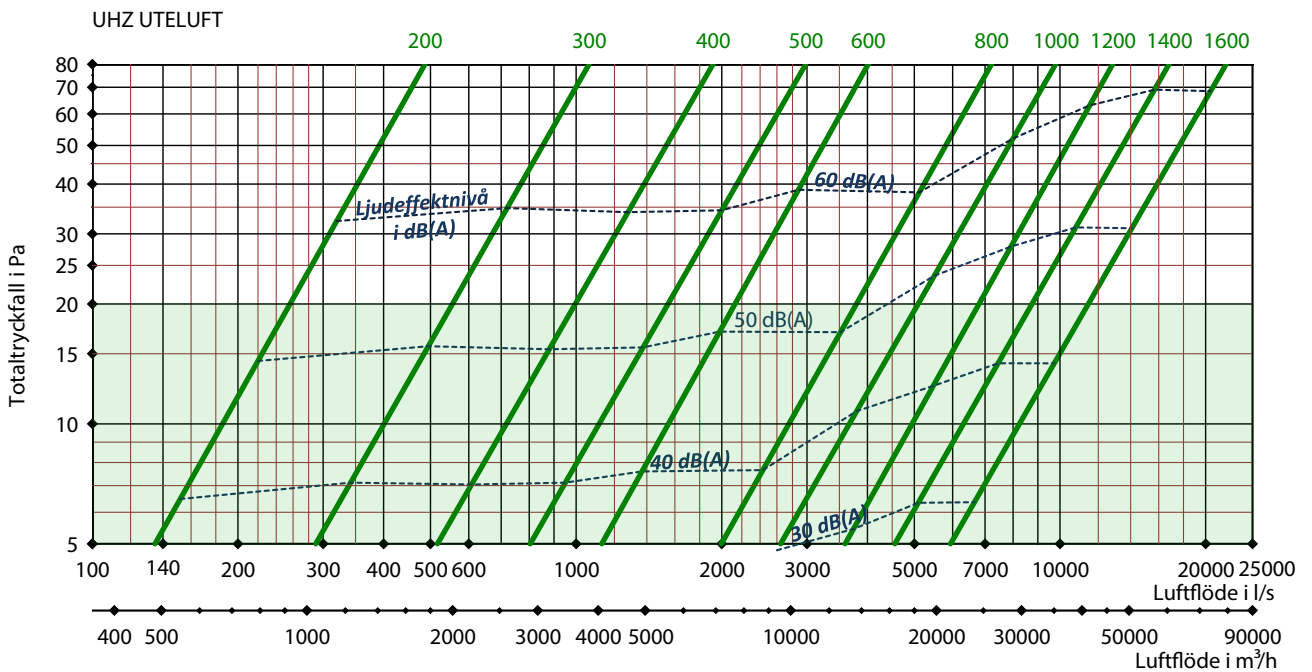
Size ABC-UHZ	Weight Kg	A mm	B mm	C mm	D mm	E mm	Size ABC-TG EI30 <sup>1</sup>
200	15	400	400	390	650	650	300
300	20	500	500	500	800	800	400
400	30	600	600	560	1050	1050	500
500	40	700	700	650	1200	1200	600
600	45	800	800	750	1300	1300	700
800	65	1000	1000	950	1700	1700	900
1000	95	1200	1200	950	1900	1900	1100
1200	150	1400	1400	1050	2100	2100	1300
1400	190	1600	1600	1400	2400	2400	1500
1600	220	1800	1800	1600	2500	2500	1700




<sup>1</sup> Insulation corresponding to fire class EI30.

## DIMENSIONS

Specified data are guide values.



 The green marked area are a good energy choice

Distance corrected sound level dB(A)	
Distance m	Correction dB(A)
5	-22
10	-28
15	-32
20	-34
30	-38
40	-40
50	-42
60	-44

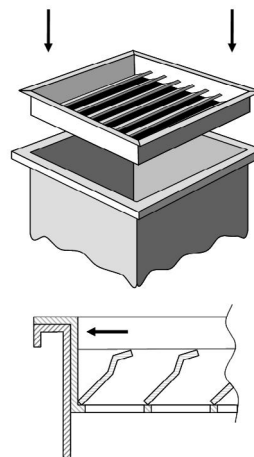
Sound and pressure measurements performed by RISE

ABC Ventilationsprodukter AB Tel: 033-29 08 80 [www.abcvent.se](http://www.abcvent.se)

We retain the right to make changes without prior warning. Reproduction or copying of this data sheet is prohibited.

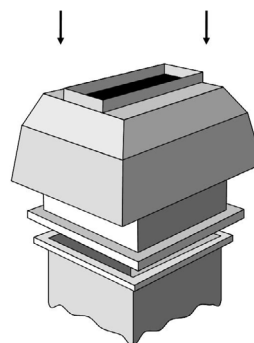
# Installation

1. ABC's roof hoods are manufactured to be installed on some sort of roof duct, for example ABC-TG, TGC, TGLD or on already existing roof duct. As an extra alternative, ABC-BS can be installed as a non-return damper between the roof hood and roof duct. The non-return damper is placed in the opening of the roof duct and is attached with metal screw above the stop ledge against the roof duct.



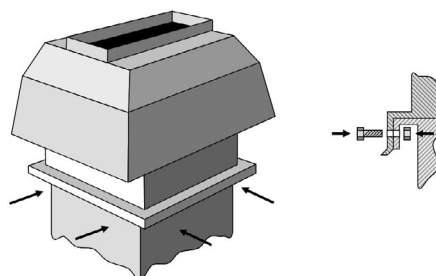
2. ABC's square / rectangular hoods, exhaust / intake air and combi roof hoods are designed with an edge that is placed outside the roof duct.

When installing combi hoods, make sure that the hood is placed the right way - exhaust air and intake air over the right duct in the roof duct.



3. When the roof hood is mounted so that it's frame covers the roof duct, attach it in a suitable way, for example with M10 bolt and nut ( depending on the size). Fix the hood against the roof duct and drill the required number of holes through the roof hood and the roof duct.

For larger roof hoods, it's recommended to attach them to the roof with metal wires.



## Environmental product declaration

For exact content of the product, see the current Building product declaration on [www.abcvent.se](http://www.abcvent.se)