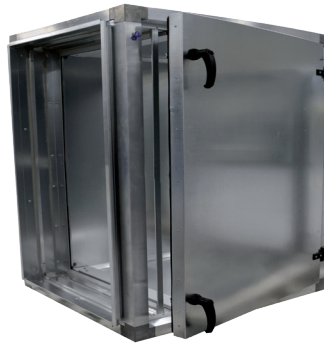


ABC-MFS

HEAT INSULATED FILTER HOUSING



USE

ABC-MFS is a heat and condensation insulated filter housing designed for bag filters.

DESIGN

ABC-MFS is usually manufactured in aluzinc, corrosivity class C4. Available as standard in two lengths, 600 mm for shortbag filter and 850 mm for long bag filters as well as compact filter with 25 mm frame.

ABC MFS is delivered in a insulated double jacketed design in aluzinc sheet with a framework of aluminum profiles.

The service door is hung on the right as standard with adjustable hinges and locked with a door lock.

Pressure measuring nipples are included.

In the standard version, ABC MFS is manufactured with a 20 mm PG connection for duct mounting, or an alternative version with a 40 mm flange at an additional cost.

ABC MFS is equipped with ABC-EXL eccentric locking for compact and bag filters with 25 mm frame. ABC-EXL provides an effective seal between filter frame and filter housing that minimizes leakage flow across the filter.

EXAMPLE DESCRIPTIVE TEXT

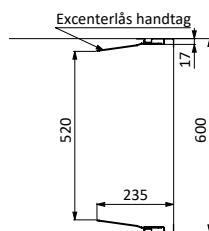
Filter housing ABC-MFS manufactured by ABC Ventilationproducts AB. Size 600x600/850 manufactured from aluzink in corrosion protection class C4. PG joint duct connection. Eccentric locking.

Filter locking

Eccentric locking for filters with 25 mm frames.

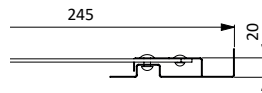
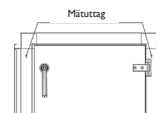


Eccentric locking



The image above shows the inside dimensions when use of ABC-EXL.

Measuring terminals



NOTE: It's possible to order ABC-EXL with a straight handle and then the dimension between the handles will be about 560 mm.

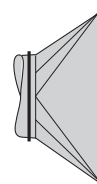
ACCESSORIES



ABC-Manometer pressure gauge

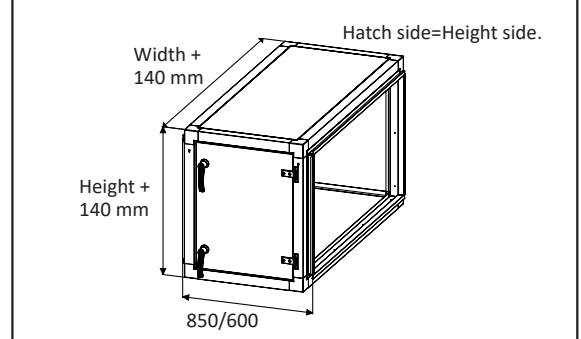
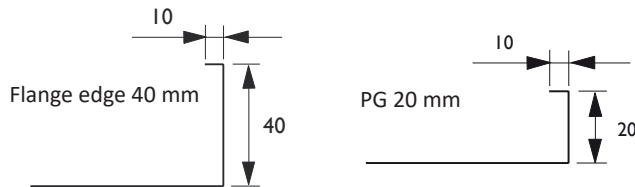


ABC-ÖGF, flat transfer to spiro tube-nipple dimension.



ABC-ÖGKC, tapered transfer to spiro tube-nipple dimension.

Duct connection



MEASUREMENTS/SIZE

Size ABC-MFS	Weight kg excl filter 850mm	Weight kg exkl filter 600mm	Width	Height	Length PG/F40 600/650	Length PG/F40 850/900	Filter module ¼	Filter rmodule ½	Filter module 1/1
300x300	26	21	300	300	600/650	850/900	1		
300x600	35	27	300	600	600/650	850/900		1	
600x300	35	28	600	300	600/650	850/900		1	
600x600	43	34	600	600	600/650	850/900			1
600x900	53	42	600	900	600/650	850/900		1	1
600x1200	61	48	600	1200	600/650	850/900			2
600x1500	71	56	600	1500	600/650	850/900		1	2
600x1800	79	63	600	1800	600/650	850/900			3
900x600	52	41	900	600	600/650	850/900		1	1
900x900	63	47	900	900	600/650	850/900	1	2	1
900x1200	71	57	900	1200	600/650	850/900		2	2
900x1500	82	66	900	1500	600/650	850/900	1	3	2
900x1800	90	73	900	1800	600/650	850/900		3	3
1200x600	60	48	1200	600	600/650	850/900			2
1200x900	73	58	1200	900	600/650	850/900		2	2
1200x1200	81	65	1200	1200	600/650	850/900			4
1200x1500	93	75	1200	1500	600/650	850/900		2	4
1200x1800	101	82	1200	1800	600/650	850/900			6
1500x600	69	54	1500	600	600/650	850/900		1	2
1500x900	82	66	1500	900	600/650	850/900	1	3	2
1500x1200	90	72	1500	1200	600/650	850/900		2	4
1500x1500	103	84	1500	1500	600/650	850/900	1	4	4
1500x1800	111	91	1500	1800	600/650	850/900		3	6
1800x600	78	62	1800	600	600/650	850/900			3
1800x900	92	74	1800	900	600/650	850/900		3	3
1800x1200	100	81	1800	1200	600/650	850/900			6
1800x1500	115	94	1800	1500	600/650	850/900		3	6
1800x1800	123	101	1800	1800	600/650	850/900			9
1800x2100	138	114	1800	2100	600/650	850/900		3	9
1800x2400	146	120	1800	2400	600/650	850/900			12
2100x600	86	69	2100	600	600/650	850/900		1	3
2100x900	102	83	2100	900	600/650	850/900	1	3	3
2100x1200	111	90	2100	1200	600/650	850/900		2	6
2100x1500	126	104	2100	1500	600/650	850/900	1	5	6
2100x1800	135	111	2100	1800	600/650	850/900		3	9
2100x2100	151	125	2100	2100	600/650	850/900	1	6	9
2100x2400	159	132	2100	2400	600/650	850/900		4	12
2400x600	95	76	2400	600	600/650	850/900			4
2400x900	112	91	2400	900	600/650	850/900		4	4
2400x1200	121	97	2400	1200	600/650	850/900			8
2400x1500	137	113	2400	1500	600/650	850/900		4	8
2400x1800	145	120	2400	1800	600/650	850/900			12
2400x2100	162	135	2400	2100	600/650	850/900		4	12
2400x2400	171	142	2400	2400	600/650	850/900			16

Environmental product declaration:

For exact content of the product, see the current Building product declaration on www.abcvent.se