

ABC-CDF

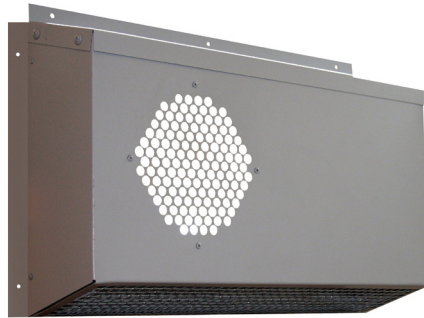
COMBINED AIR INTAKE OR EXHAUST AIR WALL HOOD
2018-11

Product brochure



ABC-CDF

AIR INTAKE OR EXHAUST AIR



USE

Combined air intake or exhaust air wall hood.

DESIGN

ABC-CDF is a combined air intake or exhaust air wall hood. The exhaust air is evacuated horizontally via a circular wired mesh net on the front of the hood. The fresh air is taken in the bottom of the hood, also by a wire mesh net. This construction prevents shortcut between exhaust air and fresh air, as well as eliminating the risk of water entering the system with the fresh air.

Reversible for right or left version

Material: Corrosion class C4

MAINTENANCE

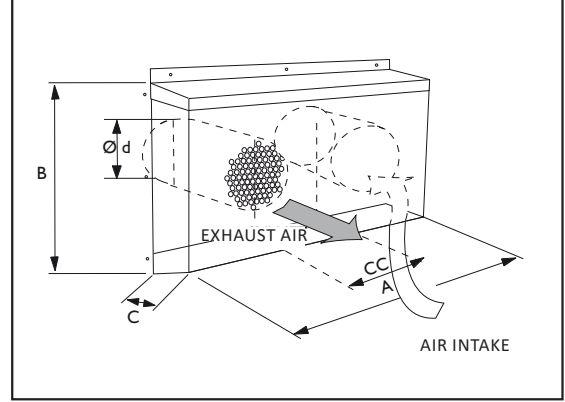
Inspection of the product / sheet surface should be done least once a year.

EXAMPLE, DESCRIPTIVE TEXT

ABC-CDF by ABC Ventilationsprodukter AB.
Dimension 200, manufactured in abc Garantiplåt in corrosivity class C4.

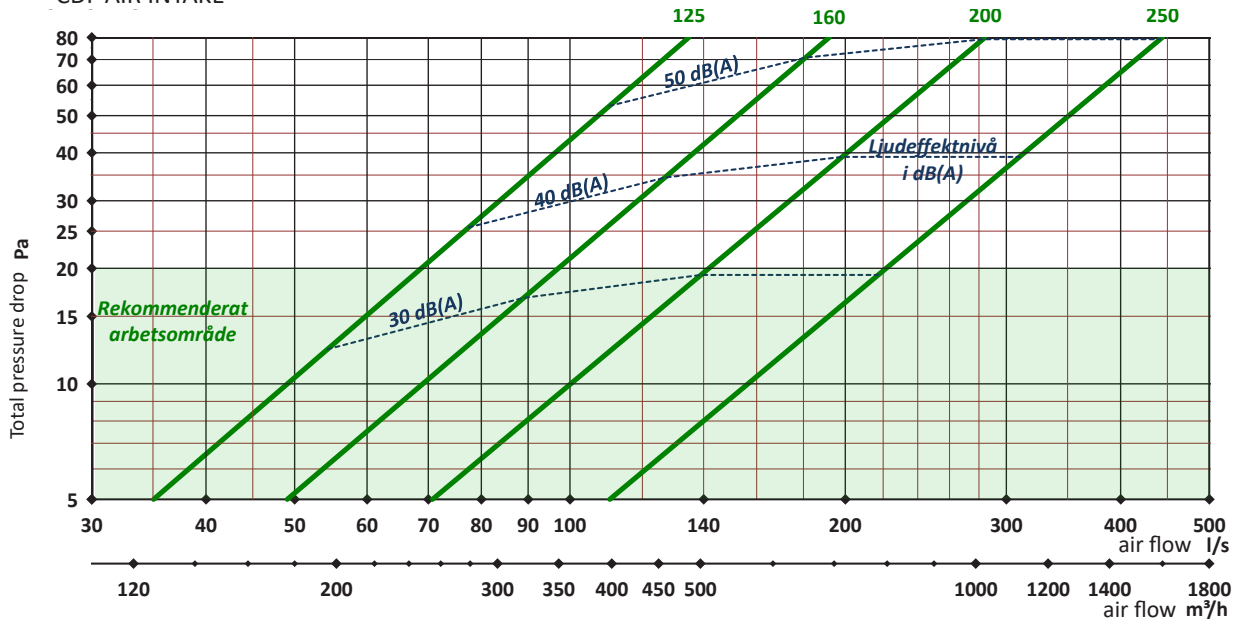
SIZE

Size ABC-CDF	A mm	B mm	C mm	Ø d	CC mm
125	400	255	115	125	185
160	470	295	115	160	225
200	560	335	150	200	260
250	660	400	185	250	310

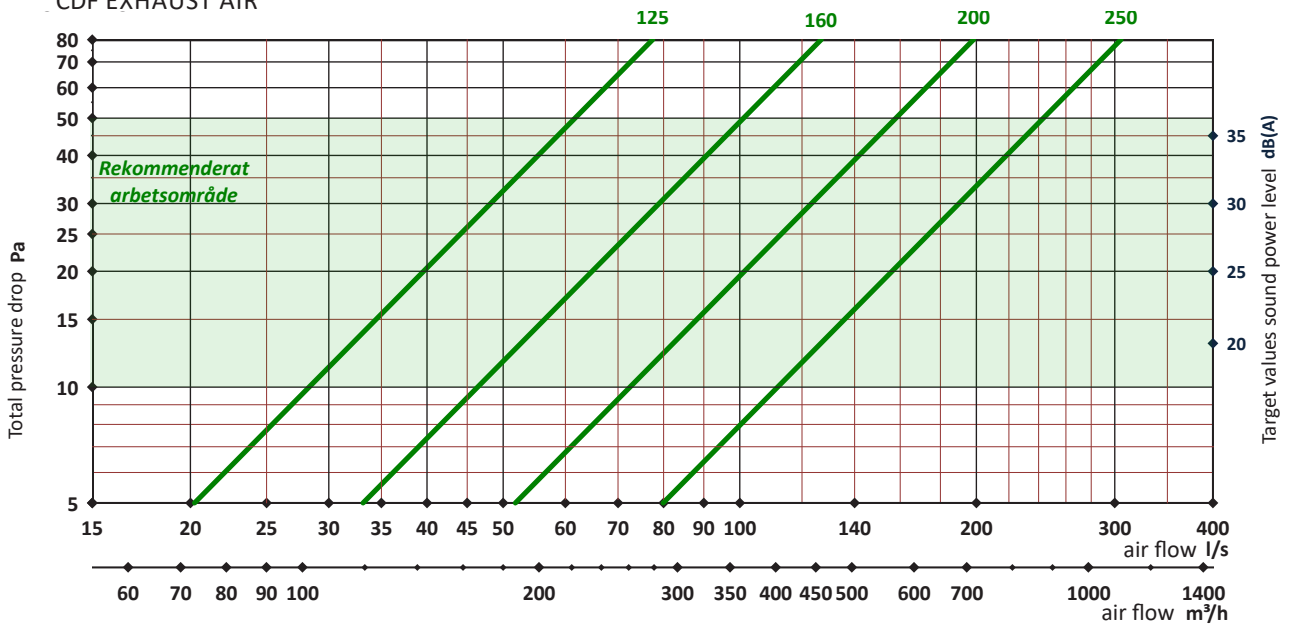


DIMENSIONS

CDF AIR INTAKE



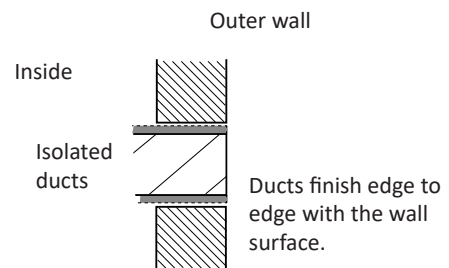
CDF EXHAUST AIR



Installation instructions:

1. Make the necessary openings in the wall and pull out the ventilation ducts for exhaust air and fresh air so that the ducts finish edge to edge with the wall surface. The ducts are isolated all the way to the wall surface. Seal the openings in the wall.

2. The wall hood has rubber lining spiro connections. Connect the wall hood to the fresh air and exhaust air duct. Attach the hood to the wall in a appropriately way. Seal properly.



Environmental product declaration

PRODUCT INFORMATION

1. Input material

Metal content	Weight %
abc Garantiplåt™	>99
Galvanized steel	>99
Aluzinc	>99
Stainless steel EN 1.4301	>99
Acid-proof stainless steel EN 1.4404	>99
Copper	>99

Gasket	Weight %
EPDM	<1
EPDM	<1
EPDM	<1
EPDM	<1
EPDM	<1
EPDM	<1

2. Production

The production plant does not require a permit or notification under the environmental protection act.

3. Distribution of finished product

- The product is manufactured in Borås.
- The company is affiliated with FTI AB
- Transport is only carried out with environmentally certified transports.

4. Construction phase

- Environmental impact is considered insignificant. Air or electric hand tools are used when assembling. Fixing is done with fastener (screw). Hazardous waste does not occur.

5. Usage phase

No known environmental impact.

6. Operation and maintenance

Inspection of the product / sheet surface should be done least once a year.

When repainting, use recommended painting systems.

As a pre-treatment, wash the surface with a mild 5% alkaline aqueous solution.



ABC Ventilationsprodukter AB Tel: 033-29 08 80 www.abcvent.se